

JetView Pro

Industrial Innovation Network Management System



- Manage IP-based devices from both central office and remote sites
- Automated network discovery and topology visualization
- MSR group management
- Event handling via polling, syslog, email and SNMP trap. Notifications can be sent via email, application programs, SNMP trap, XMPP, SMS and MSN Messenger
- Device configurations via SNMP, Web, Telnet and SSH
- Provide performance management
- Provide accounting management
- Centralized management to reduce network traffic

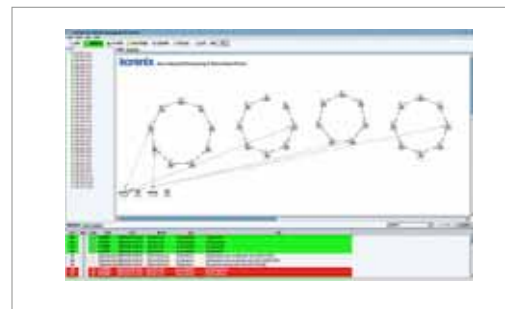
Overview

Korenix i²-NMS (Industrial Innovation Network Management System) JetView Pro is specifically designed for mission critical industrial environments. The JetView Pro provides a comprehensive platform

for monitoring, configuring and maintaining mission-critical IP-based communication networks, such as IP surveillance, factory automation, mining, substations, maritime and military applications.

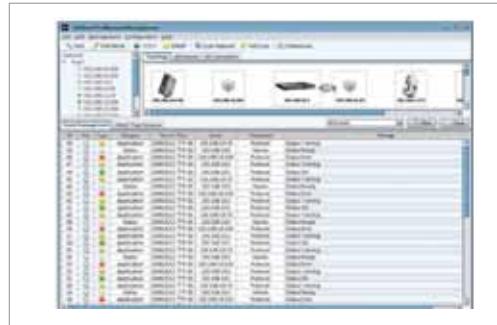
Automated Network Discovery and Topology Visualization

The JetView Pro can discover all the IP-enabled devices on a network, including multiple subnets. Device information, link status, port status will also be included on the topology map. Colored icons (normal and abnormal devices) and colored/dashed lines (active, down and blocked) are used to help the administrators easily manage and trouble shoot the network. In addition, Map can be exported or printed to diverse format, such as JPG, BMP, PNG and PDF formats.



Event Management

Administrators can define the event threshold (Critical, Major, Minor, and Warning). Notifications based on any event (link up, link down, node up, node down, etc.) can be generated. Also, notifications can be sent via email, application programs, SNMP trap, XMPP, SMS, and MSN Messenger.



- Industrial PoE Switch
- IP67/68 Ethernet Switch
- Rackmount Managed Switch
- Gigabit Switch
- Redundant Switch
- Entry-Level Switch
- Networking Computer
- Communication Computer
- Ethernet I/O Server
- Serial Device Server
- Media Converter
- Multiport Serial Card
- SFP Module
- Din Rail Power Supply

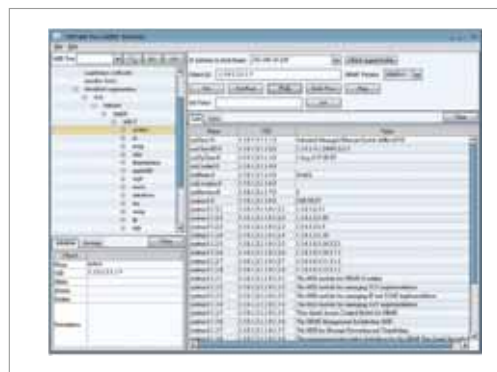
Performance Management



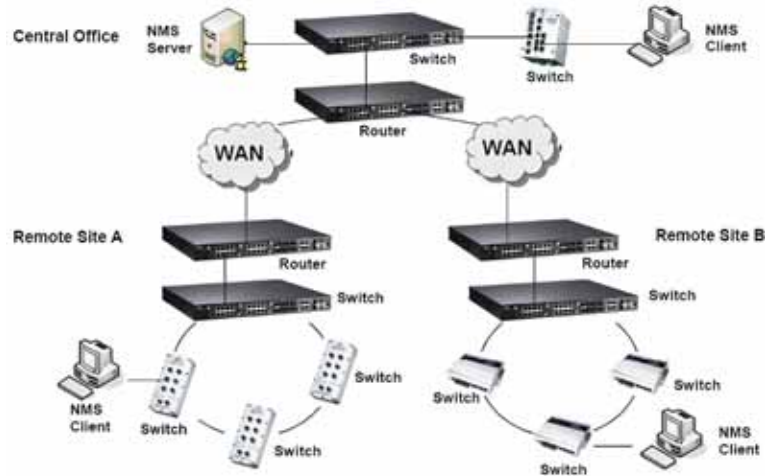
JetView Pro monitors and reports selected interface statistics. SNMP MIB information gathered for all interfaces is available for reviewing gather performance metrics without the need to instrument a custom SNMP gatherer. Moreover, JetView Pro can be centrally or remotely deployed to reduce network traffic.

Device Configurations

JetView Pro can manage Korenix devices through Web, Telnet, SSH, and SNMP. For SNMP capable devices, the JetView Pro will gather the requested information through periodic monitoring. Monitored SNMP devices will send alarms and events to alert the JetView Pro issues or events that have occurred. Group devices management is also available, ex. MSR configurations, Firmware upgrade, configuration files restore and back up, LED signal, IP address assignment, etc.



JetView Pro Applications



Ordering Information

A demo version that supports monitoring of 64 IP-enabled devices is available for authorized distributors.

Server Computer Requirements

- Minimum Intel Core 2 Quad-Core CPU 2.4 GHz or higher, 1GB RAM, 1GB hard disk
- Java Runtime Environment (JRE) 1.6.0 or higher
- Windows XP/2000/2003/Vista platforms
- Linux platforms